

Inspection Report

Company Name Pioneer Group	Scheduled Start Date 03/04/2025	Inspection Completed on 03/04/2025
Location of Inspection CHIVNOR HOUSE, B35 7HY, CHI294000C	Scheduled Time of Inspection 11:04 AM	Inspection Submission Time 11:10 AM
Inspector that undertook inspection James Horsfall	Template Used CHIVNOR HOUSE Inspection	PDF Sent to gerald.bembridge@cvch.org.uk

Inspection Score and Overall Grade		
Actual Score	Max Score	Inspection %
0	0	0
Banding Name Default Banding	Overall Inspection Result Default Banding Item	

1 Lower Ground		
1.1 - Question Internal and External Fire Escape Routs and Exits Are Clear of Obstruction	1.1 - Responses Pass	
1.2 - Question Laundry Room clean and tidy	1.2 - Responses Pass	
1.3 - Question Flush Hot & Cold Taps in Laundry Room	1.3 - Responses Y	
1.4 - Question Tank Room (Visual Check for Water Leak)	1.4 - Responses Pass	
1.5 - Question Dry-riser & Electric Cupboards Clear of Rubbish, no Holes or Large Cracks in The Walls, Ceiling or Floor	1.5 - Responses Pass	
1.6 - Question Cleaning, In Line With The Specification	1.6 - Responses Pass	
1.7 - Question Disabled Toilet Clean and in Working Order	1.7 - Responses Pass	
1.8 - Question Disabled Toilet Flush Hot & Cold Including Service Taps	1.8 - Responses Y	
1.9 - Question Disabled Toilet Test Pullcord	1.9 - Responses Y	
1.10 - Question Lighting, in Working Order	1.10 - Responses Pass	
1.11 - Question Fire Safety Issues (Tenants Store or Leave items in Communal Areas)	1.11 - Responses Pass	

1.12 - Question Fire Doors (Making Sure The Seals, Self Closing Devices, Signs are present and The Doors Close Properly)	1.12 - Responses Pass	
1.13 - Question Mobility Scooter Charging Area Clean And Tidy	1.13 - Responses Y	
1.14 - Question Any Other Issues to Report?	1.14 - Responses N	

2 Ground Floor		
2.1 - Question Chute Room Clear of Rubbish (chute not Blocked)	2.1 - Responses Pass	
2.2 - Question Internal and External Fire Escape Routs and Exits Are Clear of Obstruction	2.2 - Responses Pass	
2.3 - Question Fire Alarm Test/ Call Point Tested (Please indicate Which Call Point was Triggered)	2.3 - Responses Y	
2.4 - Question Lighting in Working Order	2.4 - Responses Pass	
2.5 - Question Fire Safety Issues (Tenants Store or Leave items in Communal Areas)	2.5 - Responses Pass	
2.6 - Question Toilets Are Clean and in Working Order	2.6 - Responses Pass	
2.7 - Question Toilets Flush Hot & Cold Taps in Both Toilets	2.7 - Responses Pass	
2.8 - Question Test Pull Cords in Toilets	2.8 - Responses Y	
2.9 - Question Lifts Clean and in working Order	2.9 - Responses Pass	
2.10 - Question Dry-riser & Electric Cupboards Clear of Rubbish, no Holes or Large Cracks in The Walls, Ceiling or Floor	2.10 - Responses Pass	
2.11 - Question Fire Doors (Making Sure The Seals, Self Closing Devices, Signs are present and The Doors Close Properly)	2.11 - Responses Pass	
2.12 - Question Cleaning, In Line With The Specification	2.12 - Responses Pass	
2.13 - Question Flush Tap in Cleaning Cupboard	2.13 - Responses Y	
2.14 - Question Key Safe Make Sure All Relevant Keys Are Present	2.14 - Responses Y	
2.15 - Question Notice Board Make Sure Safety Information Not Blocked, remove outdated flyers.	2.15 - Responses Y	
2.16 - Question Any Other Issues to Report?	2.16 - Responses N	


3 Communal Room/Kitchen		
3.1 - Question Communal Room/Kitchen Clean and Tidy	3.1 - Responses Y	
3.2 - Question Communal Room Pullcord Test	3.2 - Responses Y	
3.3 - Question Flush Hot & Cold Taps in Both Sink	3.3 - Responses Y	
3.4 - Question Flush Hot & Cold Taps in Wash Basin	3.4 - Responses Y	
3.5 - Question First Aid Kit Present And Stocked Up	3.5 - Responses Y	

4 1st Floor		
4.1 - Question Chute Room Clear of Rubbish (chute not Blocked)	4.1 - Responses Pass	
4.2 - Question Fire Doors (Making Sure The Seals, Self Closing Devices, Signs are present and The Doors Close Properly)	4.2 - Responses Pass	
4.3 - Question Dry-riser & Electric Cupboards Clear of Rubbish, no Holes or Large Cracks in The Walls, Ceiling or Floor	4.3 - Responses Pass	
4.4 - Question Lighting in Working Order	4.4 - Responses Pass	
4.5 - Question Fire Safety Issues (Tenants Store or Leave items in Communal Areas)	4.5 - Responses Pass	
4.6 - Question Cleaning, In Line With The Specification	4.6 - Responses Pass	
4.7 - Question Any Other Issues to Report?	4.7 - Responses N	

5 2nd Floor		
5.1 - Question Chute Room Clear of Rubbish (chute not Blocked)	5.1 - Responses Pass	
5.2 - Question Fire Doors (Making Sure The Seals, Self Closing Devices, Signs are present and The Doors Close Properly)	5.2 - Responses Pass	
5.3 - Question Lighting in Working Order	5.3 - Responses Pass	
5.4 - Question Dry-riser & Electric Cupboards Clear of Rubbish, no Holes or Large Cracks in The Walls, Ceiling or Floor	5.4 - Responses Pass	
5.5 - Question Fire Safety Issues (Tenants Store or Leave items in Communal Areas)	5.5 - Responses Pass	
5.6 - Question	5.6 - Responses Pass	

Cleaning, In Line With The Specification		
5.7 - Question Any Other Issues to Report	5.7 - Responses N	

6 3rd Floor

6.1 - Question Chute Room Clear of Rubbish (chute not Blocked)	6.1 - Responses Pass	
6.2 - Question Fire Fire Doors (Making Sure The Seals, Self Closing Devices, Signs are present and The Doors Close Properly)	6.2 - Responses Fail	
Q 6.2 - Photo 		
6.3 - Question Lighting in Working Order	6.3 - Responses Pass	
6.4 - Question Dry-riser & Electric Cupboards Clear of Rubbish, no Holes or Large Cracks in The Walls, Ceiling or Floor	6.4 - Responses Pass	
6.5 - Question Fire Safety Issues (Tenants Store or Leave items in Communal Areas)	6.5 - Responses Pass	
6.6 - Question Cleaning, In Line With The Specification	6.6 - Responses Pass	
6.7 - Question Any Other Issues to Report?	6.7 - Responses N	

7 4th Floor

7.1 - Question Chute Room Clear of Rubbish (chute not Blocked)	7.1 - Responses Pass	
7.2 - Question Fire Doors (Making Sure The Seals, Self Closing Devices, Signs are present and The Doors Close Properly)	7.2 - Responses Pass	
7.3 - Question Lighting In Working Order	7.3 - Responses Pass	
7.4 - Question Dry-riser & Electric Cupboards Clear of Rubbish, no Holes or Large Cracks in The Walls, Ceiling or Floor	7.4 - Responses Pass	

7.5 - Question Fire Safety Issues (Tenants Store or Leave items in Communal Areas)	7.5 - Responses Pass	
7.6 - Question Cleaning, In Line With The Specification	7.6 - Responses Pass	
7.7 - Question Any Other Issues to Report?	7.7 - Responses N	

8 5th Floor

8.1 - Question Chute Room Clear of Rubbish (chute not Blocked)	8.1 - Responses Pass	
8.2 - Question Fire Doors (Making Sure The Seals, Self Closing Devices, Signs are present and The Doors Close Properly)	8.2 - Responses Pass	
8.3 - Question Lighting in Working Order	8.3 - Responses Pass	
8.4 - Question Dry-riser & Electric Cupboards Clear of Rubbish, no Holes or Large Cracks in The Walls, Ceiling or Floor	8.4 - Responses Pass	
8.5 - Question Fire Safety Issues (Tenants Store or Leave items in Communal Areas)	8.5 - Responses Pass	
8.6 - Question Cleaning, In Line With The Specification	8.6 - Responses Pass	
8.7 - Question Any Other Issues to Report?	8.7 - Responses N	

9 6th Floor

9.1 - Question Chute Room Clear of Rubbish (chute not Blocked)	9.1 - Responses Pass	
9.2 - Question Fire Doors (Making Sure The Seals, Self Closing Devices, Signs are present and The Doors Close Properly)	9.2 - Responses Pass	
9.3 - Question Lighting in Working Order	9.3 - Responses Pass	
9.4 - Question Dry-riser & Electric Cupboards Clear of Rubbish, no Holes or Large Cracks in The Walls, Ceiling or Floor	9.4 - Responses Pass	
9.5 - Question Fire Safety Issues (Tenants Store or Leave items in Communal Areas)	9.5 - Responses Pass	
9.6 - Question Cleaning, In Line With The Specification	9.6 - Responses Pass	
9.7 - Question Any Other Issues to Report?	9.7 - Responses N	

10 7th Floor		
10.1 - Question Chute Room Clear of Rubbish (chute not Blocked)	10.1 - Responses Pass	
10.2 - Question Fire Doors (Making Sure The Seals, Self Closing Devices, Signs are present and The Doors Close Properly)	10.2 - Responses Pass	
10.3 - Question Lighting, Working Order	10.3 - Responses Pass	
10.4 - Question Dry-riser & Electric Cupboards Clear of Rubbish, no Holes or Large Cracks in The Walls, Ceiling or Floor	10.4 - Responses Pass	
10.5 - Question Fire Safety Issues (Tenants Store or Leave items in Communal Areas)	10.5 - Responses Pass	
10.6 - Question Cleaning, In Line With The Specification	10.6 - Responses Pass	
10.7 - Question Any Other Issues to Report?	10.7 - Responses N	

11 8th Floor		
11.1 - Question Chute Room Clear of Rubbish (chute not Blocked)	11.1 - Responses Pass	
11.2 - Question Fire Doors (Making Sure The Seals, Self Closing Devices, Signs are present and The Doors Close Properly)	11.2 - Responses Pass	
11.3 - Question Lighting, in Working Order	11.3 - Responses Pass	
11.4 - Question Dry-riser & Electric Cupboards Clear of Rubbish, no Holes or Large Cracks in The Walls, Ceiling or Floor	11.4 - Responses Pass	
11.5 - Question Fire Safety Issues (Tenants Store or Leave items in Communal Areas)	11.5 - Responses Pass	
11.6 - Question Cleaning, In Line With The Specification	11.6 - Responses Pass	
11.7 - Question Any Other Issues to Report?	11.7 - Responses N	

12 9th Floor		
12.1 - Question Chute Room Clear of Rubbish (chute not Blocked)	12.1 - Responses Pass	
12.2 - Question Fire Doors (Making Sure The Seals, Self Closing Devices, Signs are present and The Doors Close Properly)	12.2 - Responses Pass	
12.3 - Question	12.3 - Responses	

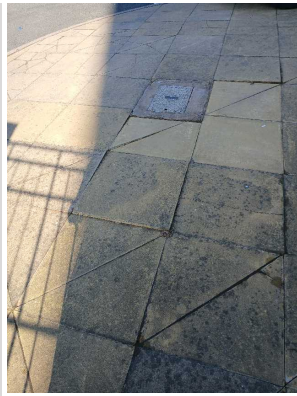
Lighting, in Working Order	Pass	
12.4 - Question Dry-riser & Electric Cupboards Clear of Rubbish, no Holes or Large Cracks in The Walls, Ceiling or Floor	12.4 - Responses Pass	
12.5 - Question Fire Safety Issues (Tenants Store or Leave items in Communal Areas)	12.5 - Responses Pass	
12.6 - Question Cleaning, In Line With The Specification	12.6 - Responses Pass	
12.7 - Question Any Other Issues to Report?	12.7 - Responses N	

13 10th Floor

13.1 - Question Chute Room Clear of Rubbish (chute not Blocked)	13.1 - Responses Pass	
13.2 - Question Fire Doors (Making Sure The Seals, Self Closing Devices, Signs are present and The Doors Close Properly)	13.2 - Responses Pass	
13.3 - Question Lighting, in Working Order	13.3 - Responses Pass	
13.4 - Question Dry-riser & Electric Cupboards Clear of Rubbish, no Holes or Large Cracks in The Walls, Ceiling or Floor	13.4 - Responses Pass	
13.5 - Question Fire Safety Issues (Tenants Store or Leave items in Communal Areas)	13.5 - Responses Pass	
13.6 - Question Cleaning, In Line With The Specification	13.6 - Responses Pass	
13.7 - Question Roof Door Secure	13.7 - Responses Pass	
13.8 - Question Any Other Issues to Report?	13.8 - Responses N	

14 External

14.1 - Question Parking Area Clean and Tidy	14.1 - Responses Pass	
14.2 - Question Ground Maintenance in Line With The Specification	14.2 - Responses Fail	14.2 - Comments 03/04/2025 uneven and loose slabs on pathway by entrance towards basement
Q 14.2 - Photo		



14.3 - Question Litter Pick, sweep up and Remove Fly tip	14.3 - Responses Pass	
14.4 - Question Lighting in Working Order	14.4 - Responses Pass	
14.5 - Question Front, Side & Rear Fire Exit Are Clear From Obstruction	14.5 - Responses Pass	
14.6 - Question Balconies (Make Sure no Combustible Items Stored)	14.6 - Responses Pass	
14.7 - Question Any Other Issues to Report?	14.7 - Responses N	

15 Bin Room /Sprinkler System		
15.1 - Question Sprinkler Panel power Light On	15.1 - Responses Pass	
15.2 - Question Sprinkler Head Present	15.2 - Responses Pass	
15.3 - Question Bin room, Make Sure Its Clean, Chutes Are Not Blocked and Switch Bins If Needed)	15.3 - Responses Y	15.3 - Comments 03/04/2025 bins are full
15.4 - Question Flush the tap in bin room	15.4 - Responses Y	